



**Water Monitoring Result at M5B - Central Cooling Water Intake Group
Mid-Flood Tide**

Date	Time	Weather Condition	Sampling Depth		Water Temperature		pH		Salinity		DO Saturation		DO		Turbidity		Suspended Solids							
					°C		-		ppt		%		mg/L		NTU		mg/L							
			m	Value	Average	Value	Average	Value	Average	Value	Average	Value	Average	Value	Average	Value	Average	Value	Average					
2/7/16	17:00	Cloudy	Middle	3.5	27.90	27.90	27.90	8.65	8.65	8.67	24.57	24.57	24.57	62.1	61.1	60.8	4.25	4.18	<u>4.16</u>	12.00	12.00	11.88	10	10.00
	17:02		Middle	3.5	27.90	27.90		8.68	8.68		24.57	24.57		60.3	59.7		4.12	4.09		11.58	11.92		10	
4/7/16	19:40	Cloudy	Middle	3.0	27.90	27.90	27.93	8.45	8.45	8.46	25.43	25.43	25.43	76.1	76.2	75.7	5.17	5.17	5.14	6.22	6.17	6.16	9	9.50
	19:41		Middle	3.0	28.00	27.90		8.46	8.46		25.43	25.43		75.3	75.0		5.12	5.10		6.15	6.10		10	
6/7/16	19:28	Cloudy	Middle	3.0	28.00	28.00	28.00	8.36	8.36	8.38	25.13	25.13	25.13	71.7	71.8	71.6	4.88	4.89	4.87	6.52	6.81	6.53	5	4.50
	19:29		Middle	3.0	28.00	28.00		8.39	8.39		25.13	25.13		71.6	71.1		4.87	4.83		6.57	6.20		4	
8/7/16	22:42	Fine	Middle	3.0	30.00	30.00	30.00	8.49	8.49	8.50	26.87	26.87	26.87	75.3	75.0	75.1	4.92	4.90	4.90	3.76	3.98	3.97	8	8.00
	22:43		Middle	3.0	30.00	30.00		8.51	8.51		26.87	26.87		74.4	75.7		4.85	4.94		4.12	4.00		8	
11/7/16	22:20	Cloudy	Middle	3.0	27.40	27.40	27.40	8.43	8.43	8.45	28.00	28.00	28.00	76.6	76.8	76.5	5.18	5.19	5.17	2.82	2.74	2.78	10	10.00
	22:21		Middle	3.0	27.40	27.40		8.46	8.46		28.00	28.00		76.4	76.0		5.17	5.14		2.71	2.85		10	
14/7/16	4:17	Cloudy	Middle	3.5	26.50	26.50	26.60	8.44	8.44	8.45	28.02	28.01	28.01	70.9	71.6	71.6	4.86	4.91	4.91	2.74	2.59	2.54	9	9.00
	4:18		Middle	3.5	26.70	26.70		8.46	8.46		28.01	28.01		72.1	71.6		4.94	4.91		2.40	2.44		9	
16/7/16	17:04	Fine	Middle	3.5	27.80	27.80	27.85	8.41	8.41	8.42	26.76	26.76	26.78	82.1	81.7	81.8	5.51	5.52	5.51	4.77	4.78	4.76	8	8.00
	17:06		Middle	3.5	27.90	27.90		8.42	8.42		26.79	26.79		83.3	80.0		5.62	5.40		4.72	4.78		8	
18/7/16	17:19	Fine	Middle	3.5	27.40	27.40	27.45	8.41	8.41	8.43	27.14	27.14	27.14	87.2	86.5	86.8	5.92	5.87	5.89	4.90	4.93	4.97	6	7.00
	17:21		Middle	3.5	27.50	27.50		8.44	8.44		27.13	27.13		87.2	86.3		5.92	5.85		5.02	5.02		8	
20/7/16	19:52	Cloudy	Middle	3.0	26.80	26.80	26.90	7.98	7.97	8.01	28.72	28.72	28.73	81.2	81.1	81.0	5.51	5.51	5.50	4.41	4.29	4.22	9	8.00
	19:53		Middle	3.0	27.00	27.00		8.04	8.04		28.73	28.73		80.9	80.8		5.50	5.48		4.06	4.11		7	
22/7/16	21:36	Fine	Middle	3.5	28.10	28.10	28.00	7.83	7.83	7.85	30.68	30.68	30.68	72.0	72.6	72.6	4.74	4.78	4.78	4.95	5.08	4.78	7	6.50
	21:37		Middle	3.5	27.90	27.90		7.86	7.86		30.68	30.68		72.8	72.8		4.79	4.79		4.67	4.43		6	
25/7/16	9:24	Fine	Middle	3.5	26.10	26.10	25.95	8.17	8.17	8.18	31.40	31.40	31.39	73.8	72.3	71.1	5.04	4.93	4.86	4.40	4.34	4.37	7	7.00
	9:26		Middle	3.5	25.80	25.80		8.19	8.19		31.38	31.38		70.0	68.4		4.78	4.67		4.30	4.43		7	
27/7/16	10:50	Fine	Middle	3.5	26.40	26.40	26.55	8.23	8.23	8.24	31.53	31.53	31.53	80.6	81.3	80.7	5.42	5.47	5.43	7.36	7.53	7.63	12	<u>13.00</u>
	10:52		Middle	3.5	26.70	26.70		8.24	8.24		31.52	31.52		80.0	80.9		5.38	5.43		7.70	7.91		14	
29/7/16	15:14	Fine	Middle	3.5	27.80	27.80	27.90	8.32	8.32	8.33	31.13	31.13	31.06	73.0	74.9	73.8	4.80	4.91	4.85	5.13	4.90	4.99	7	6.50
	15:16		Middle	3.5	28.00	28.00		8.33	8.33		30.99	30.99		74.6	72.5		4.91	4.77		5.00	4.92		6	

Remarks:
Single underline denotes exceedance over Action Level.
Double underline denotes exceedance over Limit Level.



**Water Monitoring Result at Culvert J - Reference Station
Mid-Flood Tide**

Date	Time	Weather Condition	Sampling Depth		Water Temperature			pH			Salinity		DO Saturation		DO		Turbidity		Suspended Solids					
					°C		-		ppt		%		mg/L		NTU		mg/L							
			m	Value	Average	Value	Average	Value	Average	Value	Average	Value	Average	Value	Average	Value	Average	Value	Average					
2/7/16	16:56	Cloudy	Middle	3.5	28.10	28.10	28.10	8.62	8.62	8.64	23.32	23.32	23.32	54.7	56.2	56.4	3.76	3.86	3.87	9.14	9.15	9.15	7	8.00
	16:58		Middle	3.5	28.10	28.10		8.65	8.65		23.32	23.32		57.4	57.1		3.93	3.91		9.15	9.14		9	
4/7/16	19:45	Cloudy	Middle	2.5	27.90	27.90	27.95	8.53	8.53	8.53	24.17	24.17	24.17	65.1	65.3	65.6	4.46	4.48	4.50	6.43	6.52	6.50	9	8.50
	19:46		Middle	2.5	28.00	28.00		8.52	8.52		24.17	24.17		66.1	65.9		4.53	4.51		6.60	6.46		8	
6/7/16	19:35	Cloudy	Middle	2.5	28.00	28.00	28.00	8.48	8.48	8.47	22.03	22.03	22.03	68.0	68.6	67.6	4.71	4.75	4.68	8.02	7.97	7.96	6	6.50
	19:36		Middle	2.5	28.00	28.00		8.45	8.45		22.03	22.03		67.5	66.3		4.67	4.58		7.99	7.85		7	
8/7/16	22:50	Fine	Middle	2.5	30.90	30.90	30.90	8.52	8.52	8.51	23.05	23.05	23.06	40.7	42.0	42.1	2.68	2.76	2.77	4.59	4.86	4.72	10	9.50
	22:51		Middle	2.5	30.90	30.90		8.50	8.50		23.06	23.06		42.9	42.8		2.82	2.82		4.81	4.60		9	
11/7/16	22:26	Cloudy	Middle	2.5	27.40	27.40	27.45	8.54	8.54	8.49	24.26	24.26	24.26	54.9	55.1	54.6	3.79	3.80	3.77	5.64	5.95	5.91	10	9.50
	22:27		Middle	2.5	27.50	27.50		8.43	8.43		24.25	24.25		54.7	53.7		3.77	3.70		6.06	6.00		9	
14/7/16	4:22	Cloudy	Middle	3.0	26.80	26.80	26.85	8.54	8.54	8.52	22.60	22.60	22.59	67.6	67.8	68.0	4.75	4.76	4.78	3.36	3.23	3.19	6	5.50
	4:23		Middle	3.0	26.90	26.90		8.50	8.50		22.59	22.58		68.3	68.4		4.81	4.81		3.04	3.12		5	
16/7/16	17:00	Fine	Middle	3.5	28.90	28.90	28.85	8.41	8.41	8.42	25.52	25.52	25.50	82.6	79.7	80.5	5.55	5.36	5.41	5.51	5.67	5.57	6	6.00
	17:02		Middle	3.5	28.80	28.80		8.42	8.42		25.47	25.47		80.0	79.6		5.37	5.34		5.59	5.52		6	
18/7/16	17:15	Fine	Middle	3.5	28.10	28.10	28.15	8.39	8.39	8.40	25.18	25.18	25.16	74.7	77.6	76.7	5.07	5.27	5.20	8.07	7.92	7.95	9	8.50
	17:17		Middle	3.5	28.20	28.20		8.40	8.40		25.14	25.14		78.0	76.3		5.29	5.18		7.91	7.91		8	
20/7/16	20:00	Cloudy	Middle	2.5	27.00	27.00	27.05	7.95	7.95	7.95	26.60	26.60	26.60	73.9	74.9	73.7	5.07	5.13	5.06	5.70	5.43	5.41	7	7.00
	20:01		Middle	2.5	27.10	27.10		7.96	7.95		26.60	26.60		73.6	72.3		5.04	4.99		5.26	5.23		7	
22/7/16	21:41	Fine	Middle	3.0	27.60	27.60	27.60	7.93	7.93	7.91	23.83	23.83	23.83	22.1	23.2	22.0	1.59	1.61	1.53	7.95	7.82	7.92	6	7.00
	21:42		Middle	3.0	27.60	27.60		7.89	7.89		23.83	23.83		21.0	21.6		1.43	1.47		7.90	7.99		8	
25/7/16	9:20	Fine	Middle	3.5	26.30	26.30	26.30	8.20	8.20	8.19	29.54	29.54	29.52	62.1	62.1	61.5	4.25	4.24	4.20	6.65	6.81	6.72	8	7.50
	9:22		Middle	3.5	26.30	26.30		8.18	8.18		29.50	29.50		61.6	60.1		4.21	4.11		6.72	6.71		7	
27/7/16	10:45	Fine	Middle	3.5	27.10	27.10	27.30	8.19	8.19	8.20	30.72	30.72	30.71	72.2	74.1	73.3	4.82	4.96	4.89	6.64	6.92	6.82	11	11.50
	10:47		Middle	3.5	27.50	27.50		8.21	8.21		30.70	30.70		74.2	72.6		4.95	4.84		6.92	6.81		12	
29/7/16	15:10	Fine	Middle	3.5	28.30	28.30	28.65	8.24	8.24	8.26	30.89	30.89	30.80	79.6	79.6	77.9	5.20	5.20	5.09	5.14	5.23	5.16	6	5.50
	15:12		Middle	3.5	29.00	29.00		8.28	8.28		30.70	30.70		77.4	75.1		5.04	4.90		5.16	5.09		5	



**Water Monitoring Result at M5B - Central Colling Water Intake Group
Mid-Ebb Tide**

Date	Time	Weater Condition	Sampling Depth		Water Temperature		pH			Salinity		DO Saturation		DO		Turbidity		Suspended Solids						
					°C		-			ppt		%		mg/L		NTU		mg/L						
					Value	Average	Value	Average	Value	Average	Value	Average	Value	Average	Value	Average	Value	Average	Value	Average				
2/7/16	10:33	Cloudy	Middle	3.5	28.90	28.90	28.80	8.64	8.64	8.66	23.71	23.71	23.71	59.1	58.1	58.3	4.01	3.94	<u>3.95</u>	6.96	6.97	7.03	5	5.00
	10:35		Middle	3.5	28.70	28.70		8.67	8.67		23.71	23.71		57.6	58.2		3.90	3.95		7.05	7.15		5	
4/7/16	10:35	Fine	Middle	4.0	28.00	28.00	28.05	8.45	8.45	8.47	25.14	25.14	25.14	71.0	70.4	70.6	4.82	4.78	4.79	8.83	8.83	8.83	5	4.50
	10:37		Middle	4.0	28.10	28.10		8.49	8.49		25.14	25.14		70.7	70.2		4.80	4.77		8.81	8.83		4	
6/7/16	-	Amber Rainstorm Warning Signal	Middle	-	-	-	-	-	-	-	-	-	-	-	-	-	-	-	-	-	-	-	-	-
	-		Middle	-	-	-		-	-		-	-		-	-		-	-		-	-		-	
8/7/16	14:44	Fine	Middle	3.5	28.80	28.80	28.85	8.24	8.24	8.25	26.46	26.46	26.46	78.5	76.5	75.9	5.23	5.10	5.06	2.66	2.79	2.61	6	6.00
	14:46		Middle	3.5	28.90	28.90		8.26	8.26		26.45	26.45		74.7	74.0		4.98	4.93		2.50	2.48		6	
11/7/16	15:50	Fine	Middle	4.0	27.60	27.60	27.70	8.35	8.35	8.35	27.94	27.94	27.94	95.7	96.8	96.2	6.44	6.51	6.47	2.52	2.54	2.48	8	7.50
	15:52		Middle	4.0	27.80	27.80		8.35	8.35		27.93	27.93		96.7	95.7		6.50	6.44		2.55	2.32		7	
14/7/16	8:43	Cloudy	Middle	3.5	26.80	26.80	26.75	8.15	8.15	8.16	27.70	27.07	27.23	73.5	73.0	72.1	5.06	5.20	5.00	2.55	2.54	2.62	10	10.00
	8:45		Middle	3.5	26.70	26.70		8.17	8.17		27.08	27.08		71.7	70.0		4.94	4.81		2.68	2.72		10	
16/7/16	10:38	Fine	Middle	3.5	27.80	27.80	27.90	8.29	8.29	8.34	25.44	25.44	25.41	81.6	79.1	79.3	5.55	5.38	5.40	2.85	2.99	2.95	6	6.00
	10:40		Middle	3.5	28.00	28.00		8.38	8.38		25.38	25.38		79.1	77.3		5.39	5.26		3.00	2.97		6	
18/7/16	11:49	Fine	Middle	3.5	28.80	28.80	28.80	8.35	8.35	8.39	26.13	26.13	26.12	82.4	81.6	81.2	5.50	5.45	5.42	4.40	4.43	4.40	6	6.00
	11:51		Middle	3.5	28.80	28.80		8.42	8.42		26.11	26.11		80.6	80.2		5.39	5.35		4.33	4.42		6	
20/7/16	10:23	Fine	Middle	3.5	26.80	26.80	26.85	8.30	8.30	8.31	29.00	29.00	29.02	71.7	69.3	69.9	4.86	4.70	4.74	3.69	3.43	3.47	4	4.50
	10:25		Middle	3.5	26.90	26.90		8.32	8.32		29.03	29.03		69.4	69.3		4.71	4.70		3.39	3.37		5	
22/7/16	11:30	Fine	Middle	3.5	26.20	26.20	26.30	8.28	8.28	8.29	30.97	30.97	30.96	83.2	82.6	82.6	5.64	5.59	5.59	3.45	3.40	3.40	6	7.00
	11:32		Middle	3.5	26.40	26.40		8.29	8.29		30.94	30.94		82.1	82.4		5.55	5.57		3.37	3.39		8	
25/7/16	15:33	Sunny	Middle	3.5	27.20	27.20	27.30	8.34	8.34	8.35	31.48	31.48	31.41	75.6	74.3	73.9	5.02	4.91	4.90	3.69	3.61	3.68	6	6.00
	15:35		Middle	3.5	27.40	27.40		8.35	8.35		31.33	31.33		73.5	72.2		4.88	4.79		3.68	3.73		6	
27/7/16	16:55	Fine	Middle	3.5	27.00	27.00	27.00	8.26	8.26	8.28	31.53	31.53	31.47	93.7	94.2	93.7	6.28	6.31	6.26	4.32	4.33	4.32	8	8.50
	16:57		Middle	3.5	27.00	27.00		8.29	8.29		31.30	31.50		93.9	92.9		6.29	6.16		4.30	4.31		9	
29/7/16	8:39	Fine	Middle	3.5	27.00	27.00	26.85	8.28	8.28	8.30	30.37	30.37	30.43	76.6	76.3	75.8	5.17	5.15	5.11	3.52	3.45	3.58	3	3.00
	8:41		Middle	3.5	26.70	26.70		8.31	8.31		30.48	30.48		75.4	74.7		5.09	5.04		3.57	3.79		3	

Remarks:
Single underline denotes exceedance over Action Level.
Double underline denotes exceedance over Limit Level.

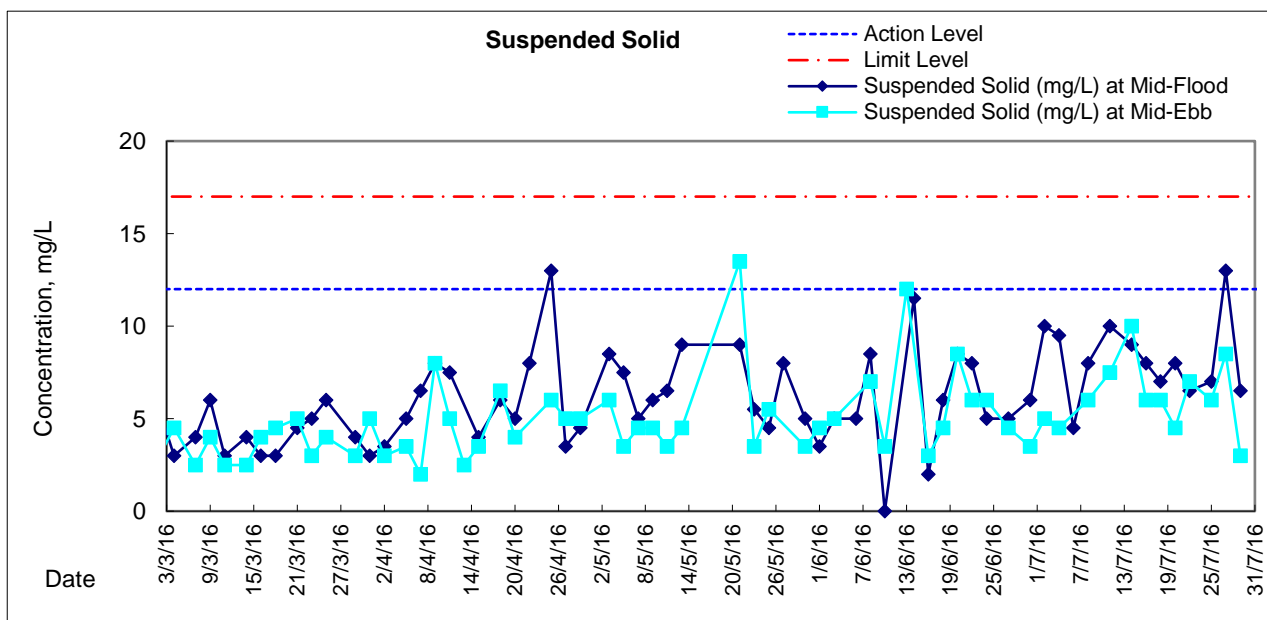
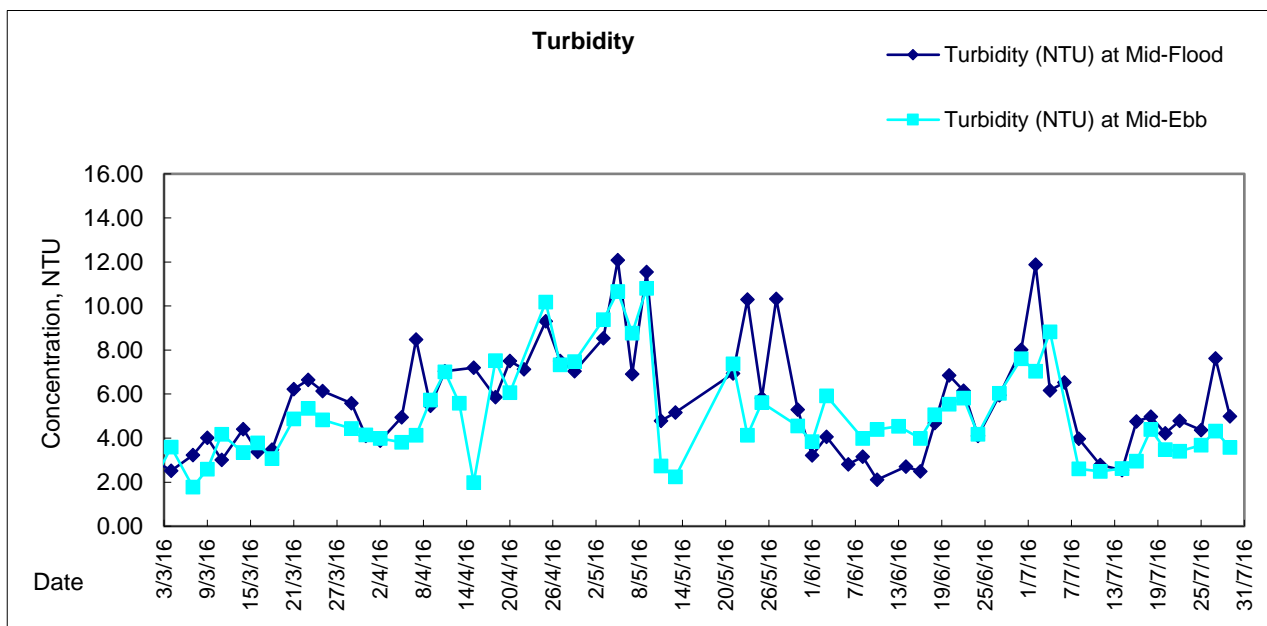
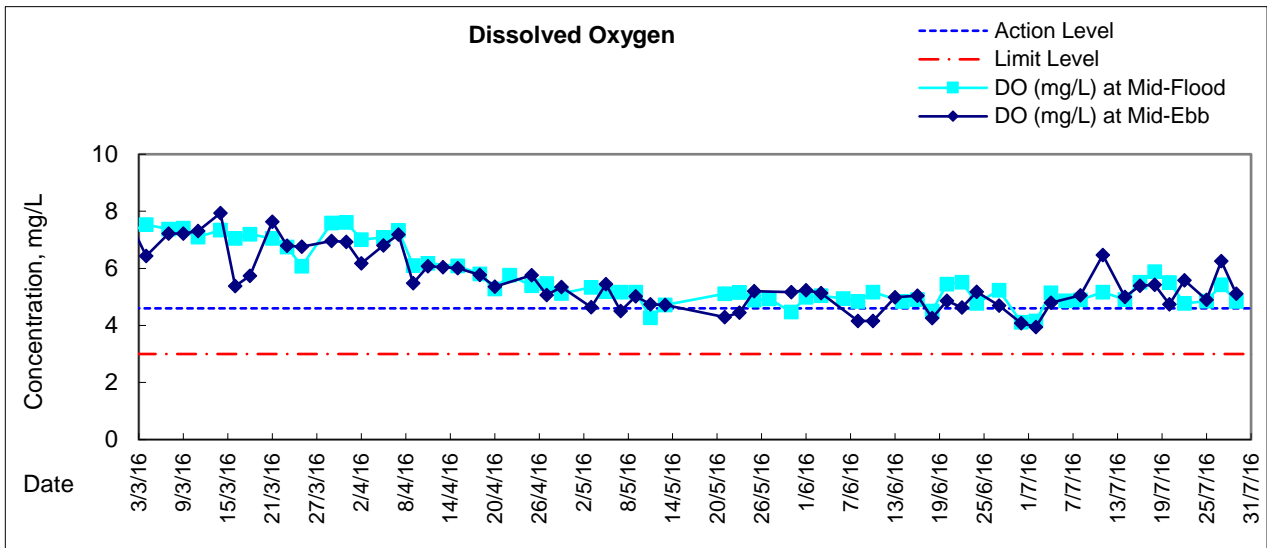


**Water Monitoring Result at Culvert J - Reference Station
Mid-Ebb Tide**

Date	Time	Weather Condition	Sampling Depth		Water Temperature			pH			Salinity		DO Saturation		DO		Turbidity		Suspended Solids					
					°C		-		ppt		%		mg/L		NTU		mg/L							
					Value	Average	Value	Average	Value	Average	Value	Average	Value	Average	Value	Average	Value	Average	Value	Average				
2/7/16	10:29	Cloudy	Middle	4	28.90	28.90	28.90	8.57	8.57	8.61	21.58	21.58	21.52	61.6	64.8	63.9	4.21	4.43	4.37	9.13	9.05	9.07	7	7.50
	10:31		Middle	4	28.90	28.90		8.64	8.64		21.45	21.45		65.2	64.1		4.46	4.38		9.05	9.05		8	
4/7/16	10:30	Fine	Middle	4	28.10	28.10	28.25	8.44	8.44	8.44	23.19	23.19	23.18	68.4	68.2	68.1	4.69	4.67	4.66	8.67	8.69	8.72	6	6.00
	10:32		Middle	4	28.40	28.40		8.44	8.44		23.16	23.16		68.0	67.8		4.65	4.64		8.76	8.77		6	
6/7/16	-	Amber Rainstorm Warning Signal	Middle	-	-	-	-	-	-	-	-	-	-	-	-	-	-	-	-	-	-	-	-	-
	-		Middle	-	-	-		-	-		-	-		-	-		-	-		-	-		-	
8/7/16	14:40	Fine	Middle	4	29.30	29.30	29.30	8.19	8.19	8.21	26.07	26.07	26.02	75.4	74.8	74.2	4.99	4.94	4.91	2.71	2.69	2.74	7	7.50
	14:42		Middle	4	29.30	29.30		8.22	8.22		25.97	25.97		74.3	72.3		4.91	4.78		2.77	2.78		8	
11/7/16	15:45	Fine	Middle	4	28.40	28.40	28.50	8.32	8.32	8.33	27.93	27.93	27.93	94.6	95.0	94.9	6.29	6.31	6.31	2.41	2.43	2.42	12	12.50
	15:47		Middle	4	28.60	28.60		8.34	8.34		27.93	27.93		95.1	94.8		6.32	6.30		2.42	2.40		13	
14/7/16	8:39	Cloudy	Middle	4	26.70	26.70	26.75	8.20	8.20	8.19	26.02	26.02	26.01	76.7	78.3	78.2	5.32	5.41	5.40	2.89	2.81	2.81	8	7.50
	8:40		Middle	4	26.80	26.80		8.17	8.17		26.00	26.00		78.8	78.8		5.44	5.44		2.77	2.78		7	
16/7/16	10:34	Fine	Middle	4	28.70	28.70	28.85	8.27	8.27	8.27	23.34	23.34	23.59	72.7	72.4	72.8	4.92	4.90	4.92	5.16	4.91	4.94	8	8.50
	10:36		Middle	4	29.00	29.00		8.27	8.27		23.34	24.34		72.5	73.5		4.89	4.96		4.79	4.88		9	
18/7/16	11:45	Fine	Middle	4	28.90	28.90	29.00	8.31	8.31	8.31	24.74	24.74	24.73	70.6	69.9	69.3	4.73	4.69	4.65	6.83	6.58	6.68	8	7.50
	11:47		Middle	4	29.10	29.10		8.31	8.31		24.72	24.72		69.5	67.1		4.66	4.50		6.64	6.66		7	
20/7/16	10:19	Fine	Middle	4	27.50	27.50	27.60	8.29	8.29	8.30	27.61	27.61	26.31	64.4	66.8	65.3	4.86	4.52	4.54	4.45	4.34	4.33	5	5.00
	10:21		Middle	4	27.70	27.70		8.30	8.30		27.51	22.51		65.9	64.0		4.46	4.33		4.28	4.24		5	
22/7/16	11:25	Fine	Middle	4	27.00	27.00	27.15	8.35	8.35	8.32	30.45	30.45	30.45	68.7	67.7	68.4	4.61	4.56	4.59	4.72	4.59	4.62	5	5.50
	11:27		Middle	4	27.30	27.30		8.28	8.28		30.44	30.44		68.4	68.9		4.58	4.62		4.58	4.58		6	
25/7/16	15:37	Sunny	Middle	4	27.90	27.90	28.00	8.27	8.27	8.29	31.50	31.50	31.46	78.8	79.4	78.8	5.18	5.22	5.18	4.60	4.63	4.47	7	7.50
	15:39		Middle	4	28.10	28.10		8.31	8.31		31.42	31.42		78.8	78.0		5.18	5.13		4.34	4.29		8	
27/7/16	16:50	Fine	Middle	4	28.20	28.20	28.50	8.25	8.25	8.25	29.47	29.47	29.45	86.8	84.6	85.4	5.78	5.57	5.88	6.78	6.81	6.82	7	7.50
	16:52		Middle	4	28.80	28.80		8.24	8.24		29.42	29.42		84.7	85.3		6.54	5.61		6.83	6.87		8	
29/7/16	8:43	Fine	Middle	4	27.00	27.00	27.05	8.28	8.28	8.28	30.19	30.19	30.23	65.7	66.9	67.0	4.40	4.48	4.49	4.03	4.02	4.02	5	4.50
	8:45		Middle	4	27.10	27.10		8.28	8.28		30.26	30.26		67.9	67.3		4.56	4.52		4.01	4.00		4	



Graphic Presentation of Water Quality Result of M5B - Central Cooling Water Intake Groups





Graphic Presentation of Water Quality Result of Culvert J - Reference Station

